

This is Google's cache of <http://www.ndsu.edu/news/features/portionofminardhallcollapses/>. It is a snapshot of the page as it appeared on Mar 9, 2010 17:29:17 GMT. The [current page](#) could have changed in the meantime. [Learn more](#)

These terms only appear in links pointing to this page: <http://www.ndsu.edu/news/features/portionofminardhallcollapses> [Text-only version](#)

News

North Dakota State University, Fargo, N.D.

## Minard Hall Updates

### Minard Hall Update Jan. 21



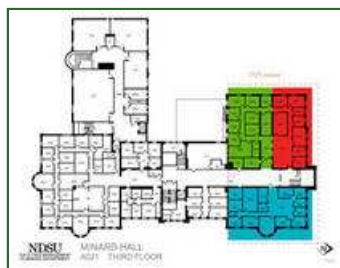
([http://www.ndsu.edu/fileadmin/news.ndsu.edu/NDSU\\_Feature/Minard/A021-01\\_sections.pdf](http://www.ndsu.edu/fileadmin/news.ndsu.edu/NDSU_Feature/Minard/A021-01_sections.pdf))

First Floor



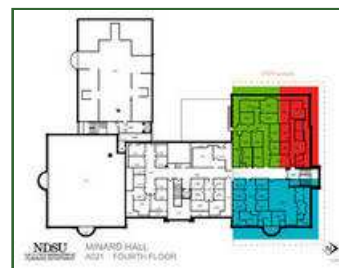
([http://www.ndsu.edu/fileadmin/news.ndsu.edu/NDSU\\_Feature/Minard/A021-02\\_sections.pdf](http://www.ndsu.edu/fileadmin/news.ndsu.edu/NDSU_Feature/Minard/A021-02_sections.pdf))

Second Floor



([http://www.ndsu.edu/fileadmin/news.ndsu.edu/NDSU\\_Feature/Minard/A021-03\\_sections.pdf](http://www.ndsu.edu/fileadmin/news.ndsu.edu/NDSU_Feature/Minard/A021-03_sections.pdf))

Third Floor



([http://www.ndsu.edu/fileadmin/news.ndsu.edu/NDSU\\_Feature/Minard/A021-04\\_sections.pdf](http://www.ndsu.edu/fileadmin/news.ndsu.edu/NDSU_Feature/Minard/A021-04_sections.pdf))

Fourth Floor

### Floors to be removed at Minard Hall

The floors in the designated "red zone" of Minard Hall will be removed.

Bruce Frantz, director of Facilities Management, said the wooden floors in the section have sloped or collapsed and will need to be removed. He said the area scheduled for floor removal will go back to the bearing wall at the south side of the red zone.

In addition, a portion of Minard Hall's exterior wall will go. "The north facade (in that section) is cracked and crumbled, and we can't leave that," Frantz said. "The west exterior wall will stay."

Office equipment, furniture and other items will be retrieved before the floors are removed. The removal process was expected to begin within two weeks.

### Minard Hall Update Jan. 15

Contractors are continuing to move faculty and staff from the English and Psychology Departments over to Morrill Hall. This move should finish sometime this weekend.

Next week, the Communication Department will be moved to the 2nd floor of Ehly Hall. Both these departments were located in the blue zone.

Bruce Frantz, director of facilities management says contractors are will developing a shoring design that will work to support the floors collapsed in the red zone of the 1929 building so that items can be recovered.

### Minard Hall Update Jan. 14

The City of Fargo has given NDSU approval to access the south and east portions of the 1st floor of the 1929 addition so that select Psychology Department lab and computer equipment can be removed. The details of this are being worked out this morning.

### Minard Hall Update Jan. 11

Faculty who have offices in the blue zone have at least another week before they will be allowed back into that part of Minard Hall. The engineering consultants have advised that a load-bearing wall be built between the northwest and northeast portion of the 1929 building. This wall would go down the middle of the hallway dividing both sides.

Bruce Frantz said he hopes that faculty will be back in their offices within the next two weeks. However, that date may change as new information becomes available.

Movers are packing and moving items from the green zone to the relocated faculty offices. They worked over the weekend and will continue to work through tomorrow.

### Minard Hall Update Jan. 7, 4:30 p.m.

Bruce Frantz has indicated faculty, staff and students may not be able to get into the blue zone of Minard Hall until Monday, Jan. 11. Officials are still waiting for approval from the city to occupy the blue portion of the building.

### President Hanson gives Minard Hall update

President Richard A. Hanson says work continues to shore up the collapsed section of Minard Hall. During a Jan. 7 open forum for faculty, staff and students, he said, "We cannot and will not put people in danger."

During the early morning hours of Dec. 27, a section of the northwest portion of Minard Hall collapsed. No one was in the structure at the time.

Hanson said structural steel has been brought in to stabilize the building's roofline, and work is progressing to support the structure's first floor. He expects workers will jack up the floors to a level position, beginning next week.

Also, a moving company is boxing up office items in areas that are considered safe. But Hanson noted teaching and research materials and equipment in offices in the northwest portion of the building have not been retrieved.

"The real issue isn't the failure so much as it is the safety of people. We need to rebuild the credibility of the building so people feel safe going in," Hanson told the nearly 100 people who attended the open forum.

"We are proceeding as appropriately as we can trying to commute a multiple set of needs," he said. "There is concern about structural failure and who is responsible, but there are issues about all the materials and the servers in the building. People's dissertations are on hard drives on computers in the building. These are extraordinarily issues as well."

Faculty attending the forum urged students to be patient and understanding as spring semester begins, saying several instructors in the affected departments do not have access to their materials.

Bruce Frantz, director of Facilities Management, said a meeting with the City of Fargo inspectors is scheduled for later today, but he expects faculty and staff will soon be allowed back in the northeast portion building

"There are many challenges out there, and we don't want to put anybody in an unsafe situation," Frantz said. "We don't want to put anyone at risk."

In the meantime, counseling services are available to persons affected by the structural failure. Through the Employee Assistance Program, individual and group counseling is available through The Village Family Service Center.

"Each of you will have a different struggle based on what you may have lost. There are fears and emotional trauma involved here," said Broc Lietz, associate vice president for finance and administration.

For more information on counseling services, contact Lietz at 1-8958 or Colette Erickson, associate director of human resources, at 1-8788.

### **Minard Hall Update Jan. 7**

Several Minard Hall classrooms will not be used Spring Semester. If you were scheduled to teach in one of the following classrooms, please consult Campus Connection or the Spring Schedule PDF (<http://www.ndsu.edu/pubweb/rr/schedule/spring/1030.pdf> (<http://www.ndsu.edu/pubweb/rr/schedule/spring/1030.pdf>) ) for your new room assignment.

Minard 215  
Minard 219  
Minard 220  
Minard 322A

Faculty, staff and students who work in the blue zone of Minard Hall may be able to go back and work their normal business hours as soon as tomorrow. Bruce Frantz said this morning that he is waiting for approval from the City of Fargo that it is safe to be occupied.

Those who do not feel comfortable working in the blue zone of Minard Hall should talk to their dean. President Richard A. Hanson has reiterated that other workspace accommodations will be made for those who wish to work elsewhere.

Finally, an open forum is planned for tomorrow, Jan. 7, at 10:30 a.m. in the Century Theater. President Hanson will answer questions and address concerns regarding Minard Hall.

### **Minard Hall Update Jan. 4**

The section of Minard south of the 1929 addition is now open for normal business hours. The 1929 section remains off limits to students, faculty and staff. (Please see graphic above).

Faculty, staff and graduate students who have offices in the green zone will have the opportunity to retrieve essential items Tuesday, Jan. 5. Deans Tom Riley and Kevin McCaul will provide specific information. This will be an escorted only process.

A moving company may be hired in the next week to clear the remainder of office and lab spaces in the green zone. Faculty with offices in the red zone will be relocated. If you have specific equipment or material requests, please contact your dean.

After the roof has been inspected by the city of Fargo, the northeast portion of the 1929 addition (blue zone) will be opened for normal business hours. The hope is to have this section of Minard open by Jan 8. Again, Deans Riley and McCaul will contact people who are directly affected.

The damaged area (red zone) will require the stabilization of the floors before any salvage work by outside contractors can occur. This may take another two to three weeks.

Albrecht Boulevard will remain closed this week, but should be reopened for the start of the semester on Monday, Jan. 11. Normal bus routes are expected to resume through this area.

## Minard Hall Update Dec. 31

Faculty, staff, and graduate students who work in Minard Hall had limited access this afternoon, Dec. 31, to retrieve personal and professional items.

The press conference held today at 10 am in the Rose Room of the Memorial Union is available for viewing in its entirety by clicking on the link below. President Richard Hanson and Director of Facilities Management, Bruce Frantz spoke.

**View the Dec. 31 Media Conference** (<http://www.ag.ndsu.nodak.edu/media/ndsupr/minardnews.ram>)

To view this video, you may need to download and install the free media player available at [www.realplayer.com](http://www.realplayer.com) (<http://www.realplayer.com>)

## Latest Information:

1. NDSU officials hope that faculty, staff and graduate students will be able to retrieve materials from Minard Hall sometime this afternoon. Depending on where the office is located, personnel may be able to get items themselves or will need to provide a list to a contractor who will retrieve the items. Deans Kevin McCaul and Tom Riley will be in contact with those who work in Minard Hall regarding that opportunity. The building will be locked down for the long holiday weekend, with 24-hour security surveillance.
2. Those whose offices are in the damaged area (as seen in the red zone of the floor plans posted), will not have access to materials in their offices for at least two weeks. Items cannot be retrieved until the building is stabilized, because any movement could interrupt the equilibrium of the building causing further damage.
3. Director of Facilities Management, Bruce Frantz, said that Minard Hall, south of the 1929 addition, should be open for regular hours on Monday, Jan. 4 barring any other issues.
4. Updated information will be posted on this site as it becomes available.

## Minard Hall Update Dec. 29

## Minard Hall Floor Plan:

The damaged area is in red



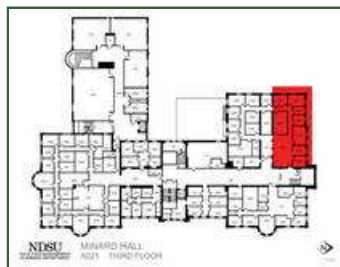
([http://www.ndsu.edu/fileadmin/news.ndsu.edu/NDSU\\_Feature/Minard/A021-01.pdf](http://www.ndsu.edu/fileadmin/news.ndsu.edu/NDSU_Feature/Minard/A021-01.pdf))

First Floor



([http://www.ndsu.edu/fileadmin/news.ndsu.edu/NDSU\\_Feature/Minard/A021-02.pdf](http://www.ndsu.edu/fileadmin/news.ndsu.edu/NDSU_Feature/Minard/A021-02.pdf))

Second Floor



([http://www.ndsu.edu/fileadmin/news.ndsu.edu/NDSU\\_Feature/Minard/A021-03.pdf](http://www.ndsu.edu/fileadmin/news.ndsu.edu/NDSU_Feature/Minard/A021-03.pdf))

Third Floor



([http://www.ndsu.edu/fileadmin/news.ndsu.edu/NDSU\\_Feature/Minard/A021-04.pdf](http://www.ndsu.edu/fileadmin/news.ndsu.edu/NDSU_Feature/Minard/A021-04.pdf))

Fourth Floor

## Webcam stills of Minard Hall collapse



([http://www.ndsu.edu/fileadmin/news.ndsu.edu/NDSU\\_Feature/Minard](http://www.ndsu.edu/fileadmin/news.ndsu.edu/NDSU_Feature/Minard))



([http://www.ndsu.edu/fileadmin/news.ndsu.edu/NDSU\\_Feature/Minard](http://www.ndsu.edu/fileadmin/news.ndsu.edu/NDSU_Feature/Minard))



([http://www.ndsu.edu/fileadmin/news.ndsu.edu/NDSU\\_Feature/Minard](http://www.ndsu.edu/fileadmin/news.ndsu.edu/NDSU_Feature/Minard))

/2009-12-26-\_1028-PM.jpg)

12-26-09 10:28 p.m.

This photo is included as the last "normal" image of the façade for comparison.



([http://www.ndsu.edu/fileadmin/news.ndsu.edu/NDSU\\_Feature/Minard/2009-12-27-\\_0128-AM.jpg](http://www.ndsu.edu/fileadmin/news.ndsu.edu/NDSU_Feature/Minard/2009-12-27-_0128-AM.jpg))

/2009-12-26-\_1128-PM.jpg)

12-26-09 11:28 p.m.

After considerable review & comparison against the image taken at 10:28PM, it appears that this is the first image that shows very small changes in the structure, including changes in the windows on the lowest level.



([http://www.ndsu.edu/fileadmin/news.ndsu.edu/NDSU\\_Feature/Minard/2009-12-27-\\_0228-AM.jpg](http://www.ndsu.edu/fileadmin/news.ndsu.edu/NDSU_Feature/Minard/2009-12-27-_0228-AM.jpg))

/2009-12-27-\_0028-AM.jpg)

12-27-09 12:28 a.m.

There is slight change in the façade, including a slight sagging in the structure lines nearing the center of the failed façade.



([http://www.ndsu.edu/fileadmin/news.ndsu.edu/NDSU\\_Feature/Minard/2009-12-27-\\_0328-AM.jpg](http://www.ndsu.edu/fileadmin/news.ndsu.edu/NDSU_Feature/Minard/2009-12-27-_0328-AM.jpg))

12-27-09 1:28 a.m.

The façade shows signs of failure; the window sills are no longer aligned.

12-27-09 2:28 a.m.

The façade has collapsed & steam plume is visible.

12-27-09 3:28 a.m.

Emergency responders are present.

### Minard Hall Update Dec. 28

Message from President Hanson

Faculty, Staff, Students,

As you know, there has been a structural failure along the northwest portion of Minard Hall. No one was in the building at the time of the failure and there were no injuries. We formed an emergency response team that has met and will continue to meet on a regular basis. At the meeting this morning, we learned the following:

1. The general contractor on the project has stabilized the area where the support column gave way.
2. Bruce Frantz, Director of Facilities Management, along with folks from Heyer Engineering and JLG Architects entered Minard Hall this morning to assess the structural damage from the inside. The damage is contained to the north tower, including English offices on the third floor, the Dean's suite and the Office of Institutional Research on the second floor and Psychology labs and offices on the first floor. We are making plans to provide space for up to 45 offices. The north east tower of Minard, along with the adjoining staircase appears structurally sound but will be tested further.
3. All of Minard Hall is closed to faculty, staff and students until further notice. We have temporary heat in the building and we are working to provide permanent solutions for the utilities. For those of you with offices in the primary damage area, we cannot allow you into that area. We are examining ways we can safely retrieve your personal and professional items. I can promise that we will do our best to retrieve your materials for you.

Provost Schnell and a team of individuals are looking into solutions about office and classroom space. I just spoke with Dr. Schnell and they are making good progress. We expect to have offices ready for you in a week and the classroom situation resolved by next week.

In the meantime, for those of you without access to your office, please call the IT Help Desk. The folks there will help you get your calls forwarded to another line and answer any IT service issues you may have. The number is 701-231-8685 (option 1).

We will continue to post information related to Minard Hall issues on our NDSU news site at [www.ndsu.edu/news/](http://www.ndsu.edu/news/).

I want to thank our excellent staff for their work on this issue. Please know that we are working together to make sure the needs of our students, staff and faculty are being addressed. An update will be provided as soon as we have new information.

Richard A. Hanson, Ph.D.

President

### Minard Hall Update Dec. 27

Sometime between midnight and 3 am on Dec. 27, part of the northwest portion of Minard Hall collapsed. NDSU police patrolling campus found steam rolling out of the north side of the building. No one was in Minard at the time.

Excavation work was being done on that side of the building by Meineke Johnson Construction as part of the \$18 million Minard Renovation Project.



Bruce Frantz, NDSU director of facilities management met early Sunday morning with structural engineers from Heyer Engineering, soils consultants from Northern Technology, contractors from Meineke Johnson, and representatives from JLG Architects, all of Fargo.

A company that specializes in structural shoring will be arriving to campus tomorrow. In the meantime, construction workers are clearing debris and filling the excavation site engineered fill.

No one will be allowed in the building until further notice. Franz says they will do whatever can be done to save personal and professional materials for those whose offices were damaged.

"However, we need to make sure the foundation is stabilized before we can determine if we can safely retrieve materials," Frantz said.



([http://www.ndsu.edu/fileadmin/news.ndsu.edu/NDSU\\_Feature/DSC\\_0272.jpg](http://www.ndsu.edu/fileadmin/news.ndsu.edu/NDSU_Feature/DSC_0272.jpg))



([http://www.ndsu.edu/fileadmin/news.ndsu.edu/NDSU\\_Feature/DSC\\_0276.jpg](http://www.ndsu.edu/fileadmin/news.ndsu.edu/NDSU_Feature/DSC_0276.jpg))



([http://www.ndsu.edu/fileadmin/news.ndsu.edu/NDSU\\_Feature/DSC\\_0281.jpg](http://www.ndsu.edu/fileadmin/news.ndsu.edu/NDSU_Feature/DSC_0281.jpg))



([http://www.ndsu.edu/fileadmin/news.ndsu.edu/NDSU\\_Feature/DSC\\_0280.jpg](http://www.ndsu.edu/fileadmin/news.ndsu.edu/NDSU_Feature/DSC_0280.jpg))



([http://www.ndsu.edu/fileadmin/news.ndsu.edu/NDSU\\_Feature/DSC\\_0288.jpg](http://www.ndsu.edu/fileadmin/news.ndsu.edu/NDSU_Feature/DSC_0288.jpg))



([http://www.ndsu.edu/fileadmin/news.ndsu.edu/NDSU\\_Feature/DSC\\_0289.jpg](http://www.ndsu.edu/fileadmin/news.ndsu.edu/NDSU_Feature/DSC_0289.jpg))

[GO BACK](#)

Last updated: Thursday, January 21, 2010 1:09:09PM  
NDSU University Relations  
Published by North Dakota State University

Office of the Vice President for University Relations  
North Dakota State University, Old Main 204  
Dept 6000, PO Box 6050  
Fargo, ND 58108-6050  
Phone: (701) 231-1068 - FAX: (701) 231-1989